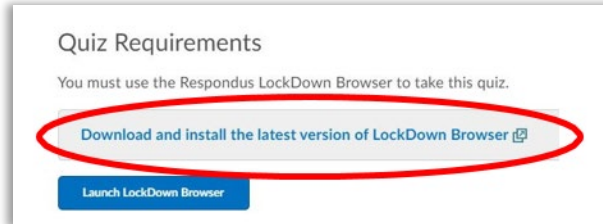
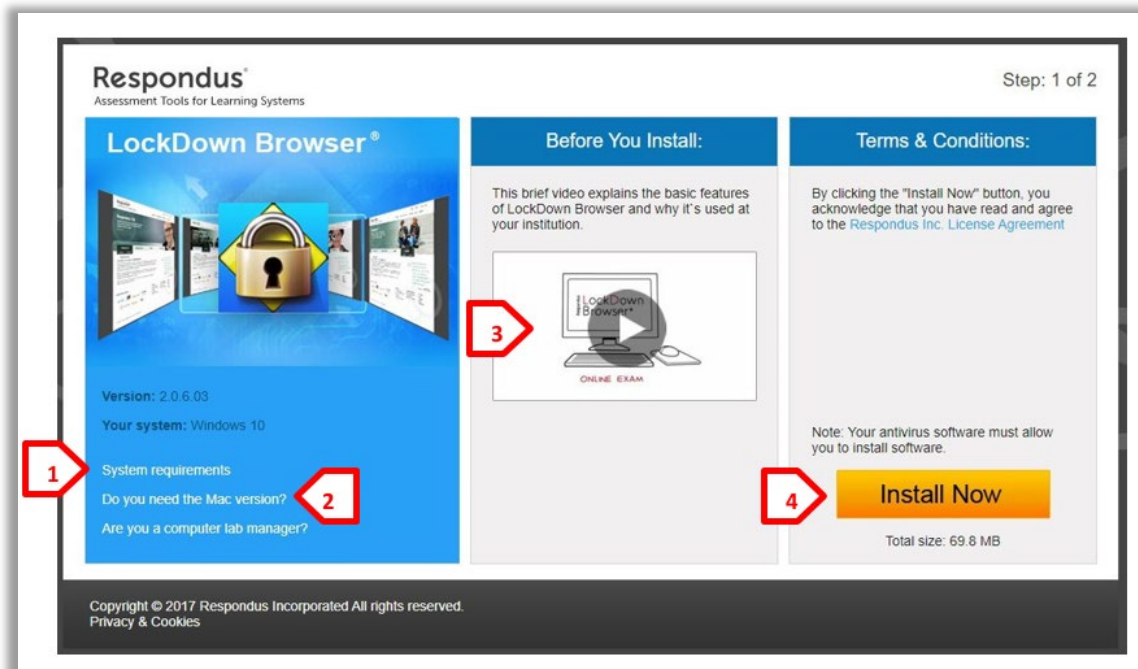


# Respondus LockDown Browser Student Installation Instructions

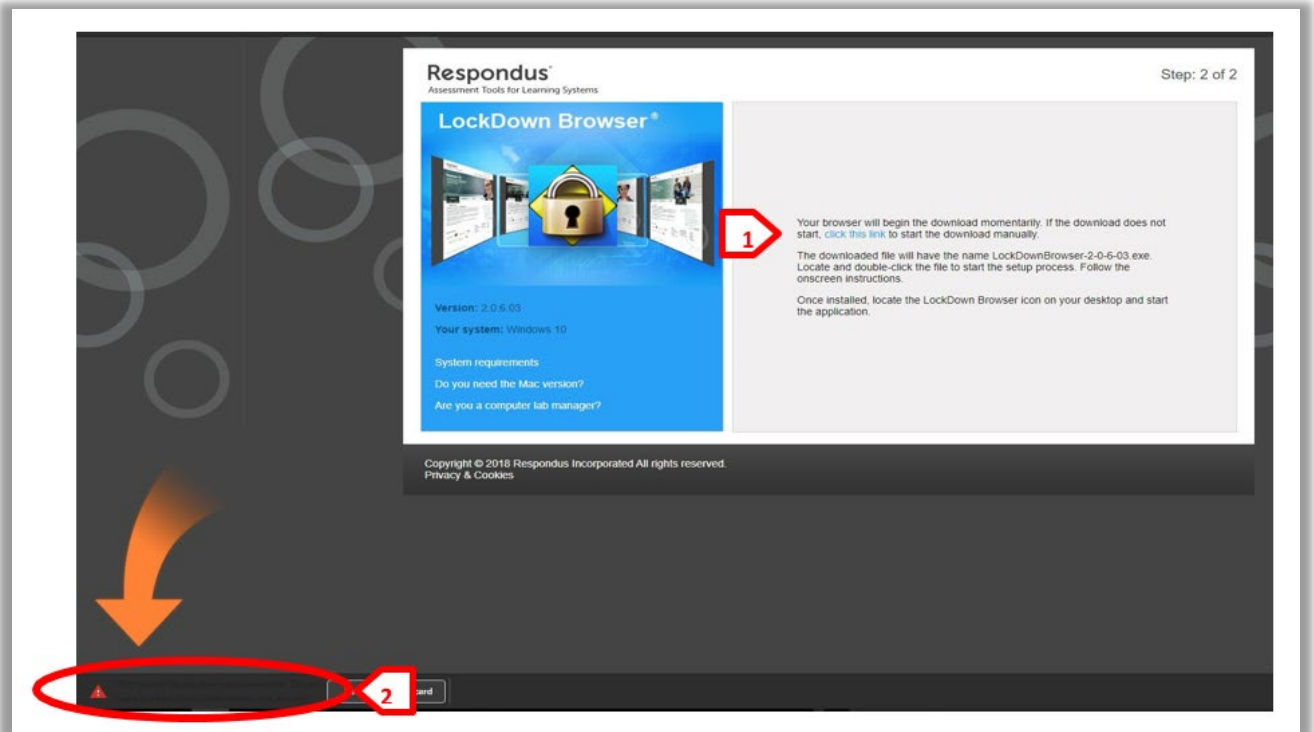
1. After starting your BlazeVIEW quiz, click the **Download and install the latest version of LockDown Browser** button.



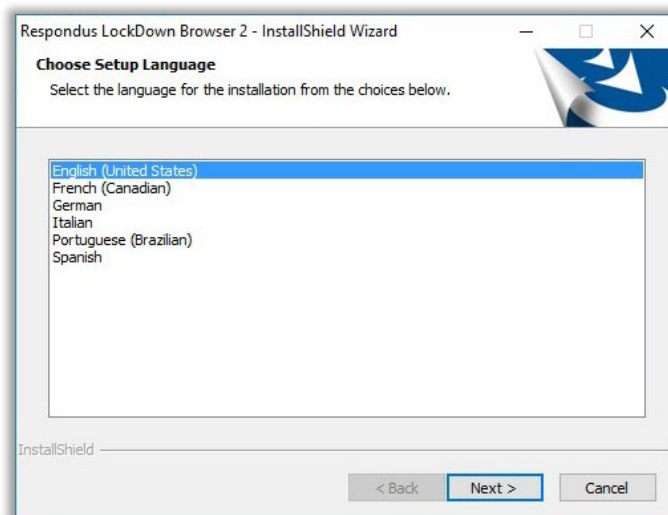
2. After you click the Download button, the Respondus LockDown Browser installation screen opens with information and options to prepare for your download.
  - Click **System requirements** [1] to verify your system will work with the LockDown Browsertool.
  - If you are using a Mac, click **Do you need the Mac version?** [2] to install the Mac version of the tool.
  - For a brief overview of the LockDown Browser tool, click on the video [3] in the **Before You Install:** column in the center of the window.
  - Click the **Install Now** button [4] to begin installing Respondus LockDown Browser



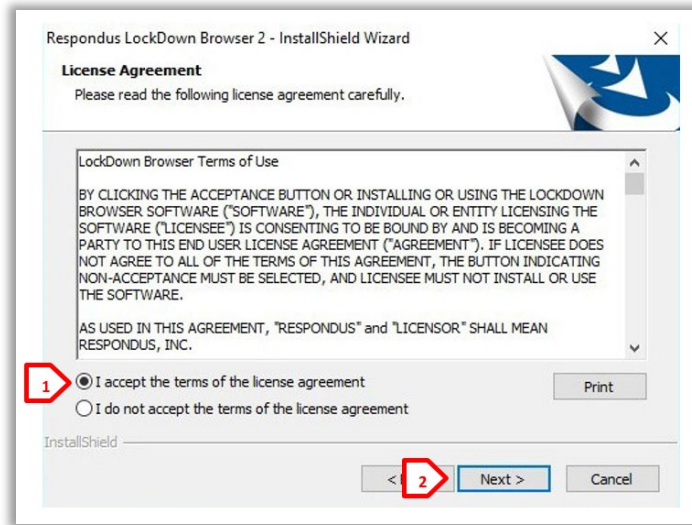
3. Clicking **Install Now** will bring them to the screen below, and the file will begin downloading. If it does not begin automatically, the student can click a **link [1]** to manually start the download.
4. The file will appear in the lower left corner of the screen beneath a large arrow. Once the download is complete, click the **file [2]** to begin installing LockDown Browser.



5. In the window that opens, click **Next**.



6. Click the radio button [1] to accept the license agreement, then click **Next** [2].



7. Click **Finish** to complete the installation.



For more information or assistance, call 229-245-6490 or email [blazeview@valdosta.edu](mailto:blazeview@valdosta.edu).  
For 24/7 BlazeVIEW or GoVIEW assistance, call 855-772-0423 or visit [GeorgiaVIEW Help Center](#).



CENTER for  
eLEARNING  
VALDOSTA STATE UNIVERSITY